



# HIGH INTENSITY TRAINING

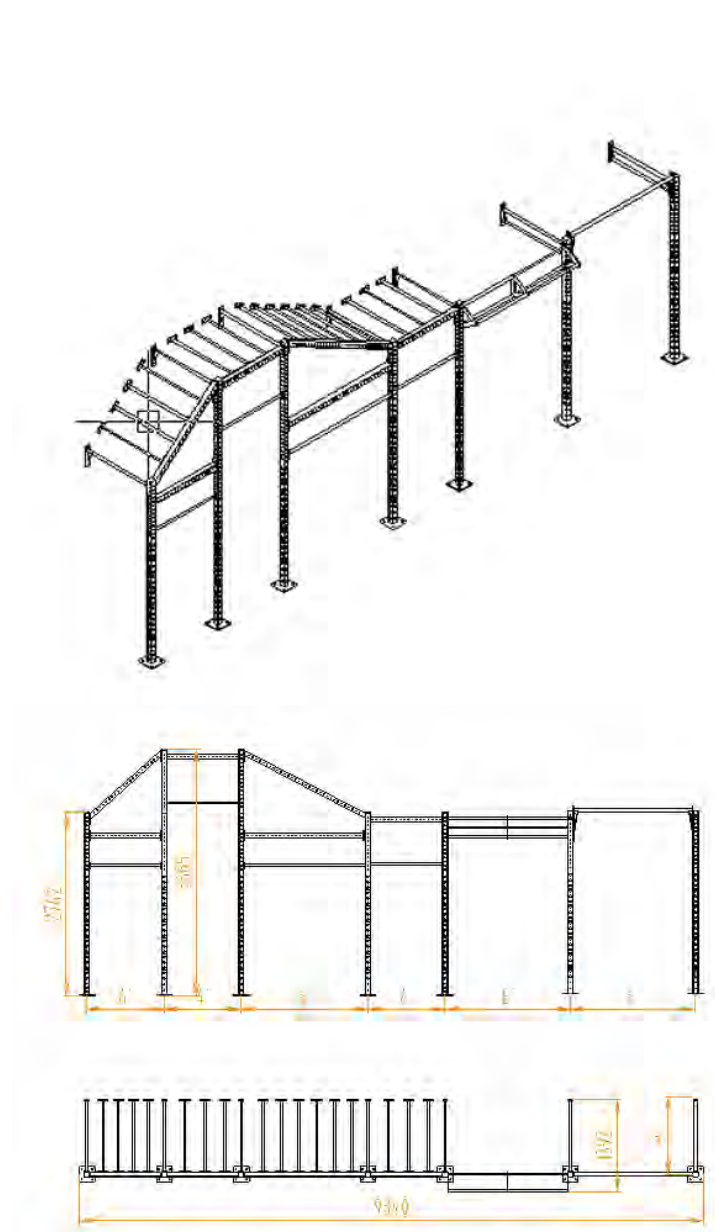




EVERETT

**H.I.T.** HIGH  
INTENSITY  
TRAINING





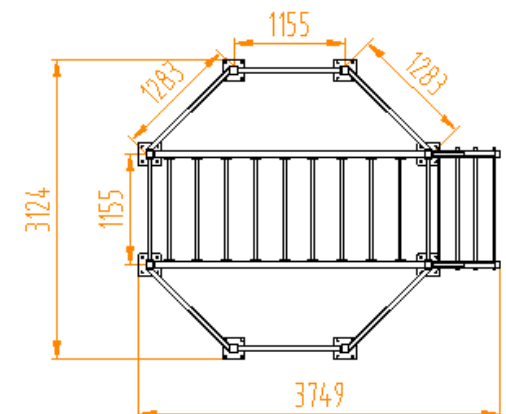
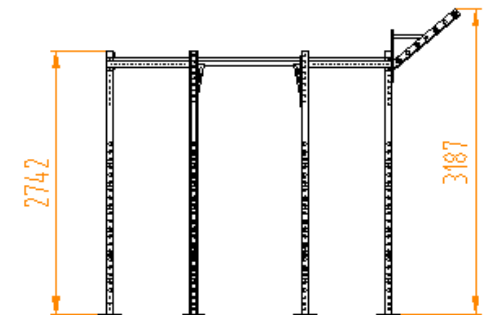
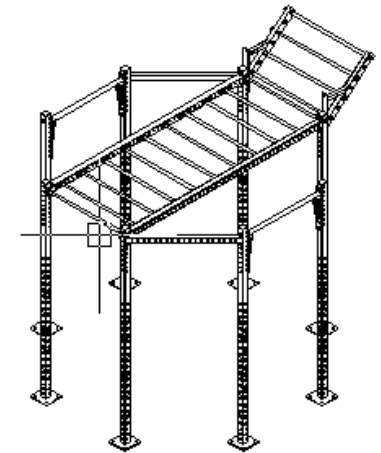
## EVERLAST WALL TRAINING STRUCTURE

SKU: EV4TSR100 COLOR: Black / Yellow



**EVERLAST HEXAGONAL  
TRAINING STRUCTURE**

SKU: EV4TSR600 COLOR: Black / Yellow





## WALL MOUNTED DIP

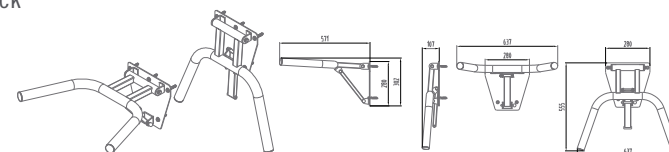
(56.5cm x 64cm x 30cm)

Expand your weight room by using the everlast all mounted dip station.

Increase the strength of your chest, shoulders And triceps.

Once your workout is complete, Return the mount to its space saving position.

**SKU:** EVWD5R120 **COLOR:** Black



## CHIN UP BAR

Easy assembly & installation

Holds up to 140kgs

Made from high quality steel

Mounts on to any solid wall

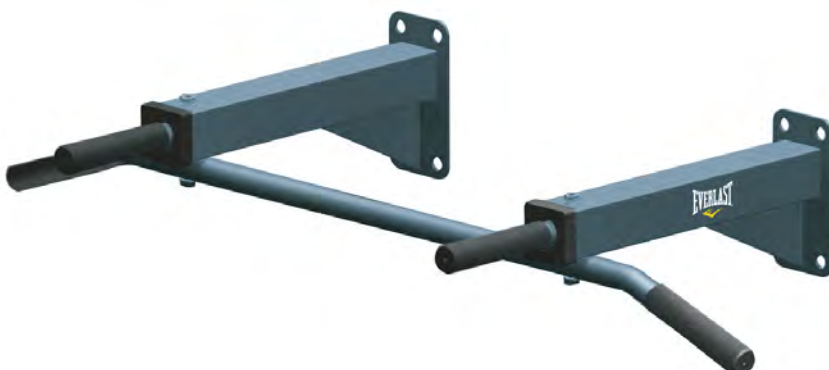
Offers a variety of grip positions & exercises

HOLDS UP TO

**140**  
**kgs**

Structure 131cm X 58cm X 60cm

**SKU:** EVCH4R207 **COLOR:** Black



## CHIN UP BAR

Easy assembly & installation

Made from high quality steel

Mounts on to any solid wall

Offers a variety of grip positions & exercises

**ENGINEERED FOR:**

TOTAL BODY CONDITIONING

STRENGTH TRAINING

INTENSE CARDIOVASCULAR WORKOUTS

HOLDS UP TO

**140**  
**kgs**

Structure 100cm x 18cm

**SKU:** EVCH9W450 **COLOR:** Grey / Black





## ADJUSTABLE POWER BRACKETS

PERFECT FOR BEGINNERS & ADVANCED

Improve strength and cardio, for all skill levels, secure grip.

Material ensures a secure grip during use.

Perfect fitness tool used to improve strength and cardio fitness.

Easily adjustable iron bracket can be modified according to exercise and skill level from 22" to 30"

Specially designed to be used as hurdles or for dips, pushups, inverted rows and more.

**EVERGRIP**

SKU: EVPB5S65 COLOR: Black / Lime





## SUSPENSION SYSTEM DELUXE

**NEW**

LETS YOU USE YOUR BODYWEIGHT WITH THE NATURAL FORCE OF GRAVITY.

Total-body workout system you can set up in less than 60 seconds at home or anywhere you go. Get stronger, build muscle, lose weight and improve flexibility fast no weights required.

Work out total body, burn fat and tone all lean muscles this trainer is a complete bodyweight gym that supports highly metabolic compound exercises and assisted exercise variations for full workouts for every skill level.

Increase muscle endurance & sport performance infinitely variable resistance. Full body resistance trainers feature indexed straps and quick adjust buckles so you can tailor resistance for each exercise.

SKU: EVST9W008 COLOR: Black / Red



**ANTI-SLIP**  
FOAM RUBBER HANDLE



**HEAVY DUTY**  
ZINC-ALLOY CARABINER



**ADJUSTABLE**  
EASY TO SET BUCKLE



**SUPER STURDY**  
DOOR ANCHOR

**PACKAGE INCLUDED:**  
TWO BODYWEIGHT RESISTANCE STRAPS  
ONE EXTENSION STRAP  
ONE CARRY POUCH  
ONE USER MAMUAL  
ONE DOOR ANCHOR





## WOOD GYM RINGS

Perfect for multiple exercises such as: Push-ups, iron cross, dips, muscle ups, pull-ups and many more.

Each set contains two rings and two numbered straps.

Superior feel of natural wood for a secure grip, even without chalk

Sold in sets of 2

Diameter: 1.25" standard

Firm grip with or without chalk

Includes (2) 1.5" Heavy Duty Black Nylon Straps with Buckle\*

18' Strap long straps, 25mm wide strap

---

**SKU:** EVGR4I125





## POWER ROPE

ENGINEERED FOR: TOTAL BODY CONDITIONING, STRENGTH, CARDIOVASCULAR TRAINING, IMPROVED GRIP STRENGTH

30' Rope, 1.5" Diameter.

Durable synthetic blend with contoured handles.

ENGINEERED FOR:

Total body conditioning

Strength training

Intense cardiovascular workouts

**SKU:** EVBR9W623 **COLOR:** BLACK

**SIZE:** BATTLE ROPE 38mm x 15m



## CLIMBING/UTILITY ROPE WITH ANCHOR

Climbing ropes have always been one of the most popular and standard equipment requests for overall improvement of physical fitness and muscle tone, particularly for upper arms and shoulders.

Extremely popular training apparatus for strength, grip and arm coordination skills for use in physical education, wrestling, gymnastics, military, and cross-fit applications. Landing mats, spotting and supervision suggested when using.

**SIZE:SKU:** EVCR4R380 **SIZE:** 38mm /length: 15m

**SKU:** EVCR4R500 **SIZE:** 50mm /length: 15m



## DELUXE SPEED ROPE

ADJUSTABLE ROPE UP TO 11 FT (3.35m)

Suitable for everyone - best jump rope for any workout, mastering double unders, exercise and fitness, mma training, boxing, bodybuilding, personal training, home and outdoor workouts.

**SKU: EVSJ6S356**

**COLOR:** Black / Lime



## 9' FEET LEATHER JUMP ROPE

High durability and speed  
High quality precision ball bearings  
Comfortable and smooth handling

**SKU: EVLR8800**

**COLOR:** Leather



## EVERGRIP™ WEIGHTED JUMP ROPE

ENGINEERED FOR: SPEED, ENDURANCE, AGILITY, COORDINATION,  
TOTAL BODY CONDITIONING

Adjustable length, 9 ft. plastic speed rope.

Evergrip™ Handles provide added grip while training.

Removable weights to challenge your cardio and upper body training.

1.5 Lbs. Maximum Removable Weights Precision Ball Bearing

Rotation For Increased Speed.

**SKU: 4485**

**COLOR:** Black

**EVERGRIP™**





### PLYOMETRIC WOODEN BOX

Our 3-in-1 power box is a staple item of any fitness studio or crossfit box. Simply rotate the wooden box to your desired height and jump.

This item is cnc machine cut with rounded edges and pre drilled screws makes this box a very fast to install.

Plyometric exercises are perfect to improve an athletes ability and skill and will seriously increase speed and strength.

---

**SKU:** EVBX8R243 **SIZE:** 20" x 24" x 30"

**H.I.T.** HIGH  
INTENSITY  
TRAINING



- **SKU: EVPB4R012**  
MINI POWER BAND offers 5lbs - 35lbs  
Resistance length - 102cm width - 12mm color:red
- **SKU: EVPB4R022**  
XSMALL POWER BAND offers 10lbs - 50lbs  
Resistance length - 102cm width - 22mm color:purple
- **SKU: EVPB4R032**  
SMALL POWER BAND provides 25lbs - 80lbs  
Resistance length - 102cm width - 32mm color:orange
- **SKU: EVPB4R044**  
MEDIUM POWER BAND gives 50lbs - 120lbs  
Resistance length - 102cm width - 44mm color:blue
- **SKU: EVPB4R065**  
LARGE POWER BAND offers 60lbs - 150lbs  
Resistance length - 102cm width - 65mm color:black

## POWERBAND

Thick, extra strong and ideal for heavy use.

Designed to work lower leg muscles, provide resistance for walks, shuffles and lunges and help to prevent and rehabilitate sprained ankles.

Perfect for power assisted pull-ups/chin-ups, as well as in all fitness activities to provide added resistance to your workout.

Allows the user to customize and create a level of resistance that fits their strength level by controlling the tension in the resistance by shortening or Lengthening the band.







## LOOP BANDS (3pk)

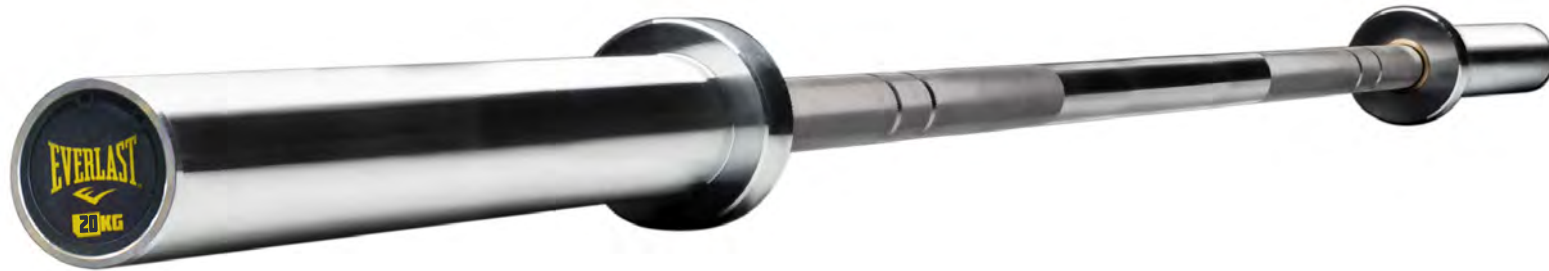
3-piece resistance bands give you a variety of resistance levels. Light, medium and heavy loops let you adjust the intensity of your workouts to challenge every major muscle group in your body.

**3**  
LEVELS OF  
RESISTANCE

**SKU:** EVMB71630 **COLOR:** Black / Grey / Yellow

**ENGINEERED FOR:**  
RESISTANCE TRAINING, WARM UP AND  
REHABILITATION OF UPPER AND LOWER BODY.





LOCKS INCLUDED (1pair)



## 28mm OLYMPIC WEIGHTLIFTING BAR, 7' 25mm OLYMPIC WEIGHTLIFTING BAR, 6'

Brass bushings for reliable spin and satisfactory whip

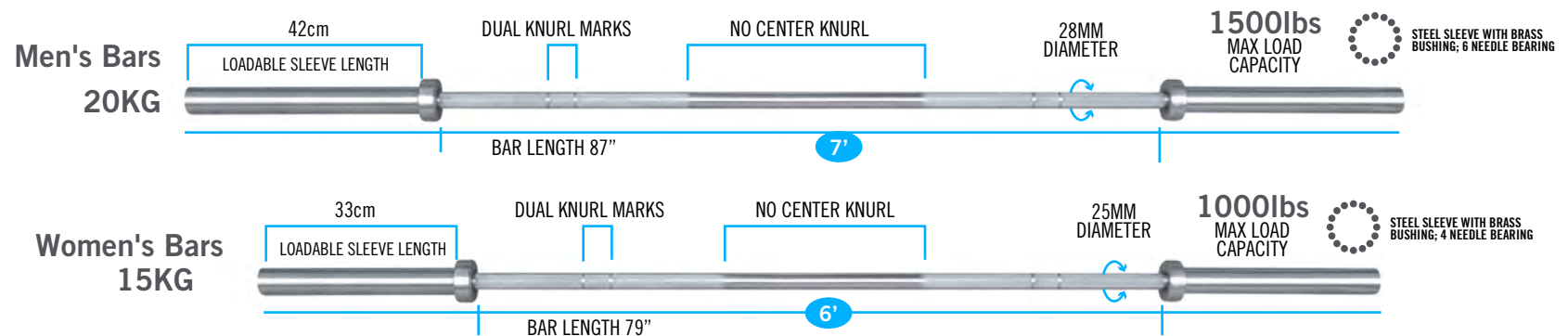
Knurling marks for both olympic and power lifting Bar collars are snap ring design

Bearings allow the hard chrome sleeves to rotate freely promoting a smoother, quieter spin.

Material :Alloy Steel with heat treatment

**SKU: EVOB4R086** WEIGHTLIFTING BAR, 7'

**SKU: EVOB6R015** WEIGHTLIFTING BAR, 6'

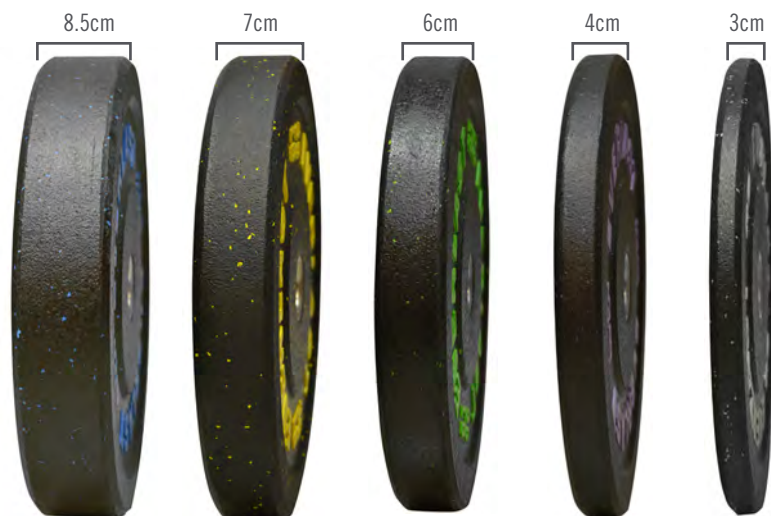




**H.I.T.** HIGH  
INTENSITY  
TRAINING







## HI-IMPACT BUMPER PLATES

DIAMETER: 45cms

Heavy-duty bumper plates designed to resist the heaviest of workouts.

Made of recycled crumb rubber.

Drop test: 2m x 8000 repetitions.

Steel rim bushing.

SKU: EVBP8R010 10LB COLOR: Grey

SKU: EVBP8R015 15LB COLOR: Pink

SKU: EVBP8R025 25LB COLOR: Green

SKU: EVBP8R035 35LB COLOR: Yellow

SKU: EVBP8R045 45LB COLOR: Blue







## ARM BLASTER

PRODUCT DIMENSIONS: 23" L X 4" H, PRODUCT WEIGHT: 1KG ONE SIZE FITS ALL.

Uniquely contoured rigid metal design allows you to isolate your arms and shoulders.

Webbed nylon belt, a thick, oversized neoprene neck pad, and dense elbow pads.

The strap features a quick release to adjust it to the perfect position.

Bulk up your biceps each time you grab a workout Bar with the bicep bomber.

**NEW**

**SKU:** EVAR9H200 **COLOR:** Black

### CURVED BODY DESIGN

The perfectly contoured shape  
conforms around your torso and  
cradles your triceps.

### HEAVY DUTY CONSTRUCTION

The arm blaster body is constructed  
from tough gauge aluminum for a  
high-level workout.

### SUPERIOR NECK SUPPORT

The elite neck strap is constructed from  
supreme foam padding for a pain-free  
experience.

### COMFORT PADDED ENDS

The dual padded design supports your  
triceps and allows you to perform max  
reps in comfort.

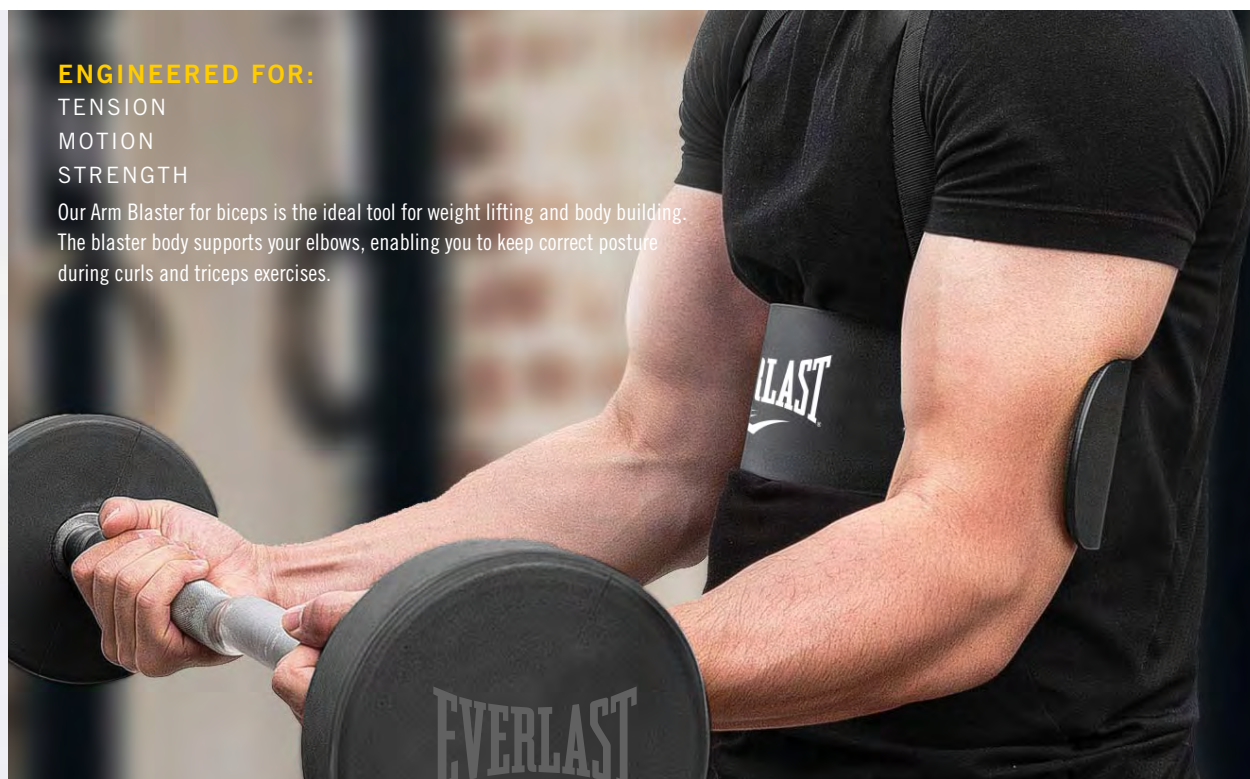
### INTUITIVE STRAP TECHNOLOGY

The strap features a quick release mechanism  
for easy adjustment into the ideal position.

## ENGINEERED FOR:

TENSION  
MOTION  
STRENGTH

Our Arm Blaster for biceps is the ideal tool for weight lifting and body building.  
The blaster body supports your elbows, enabling you to keep correct posture  
during curls and triceps exercises.





## KETTLEBELL DLX

A training plan with kettlebell is suitable for all who want to vary your training fitness and force.

Everlast kettlebells are available in the weight increments you need from lightweight

Beginner bells starting at 4kg / 9lb to 32kg / 70lb

Color-coded handles for easy recognition.

Texture matters. A well formed, balanced, and properly textured kettlebell feels

Better in the hand and performs better in motion.

---

SKU: EVIK8R009	COLOR: White	4kg / 9lb
SKU: EVIK8R018	COLOR: Pink	8kg / 18lb
SKU: EVIK8R026	COLOR: Blue	12kg / 26lb
SKU: EVIK8R035	COLOR: Yellow	16kg / 35lb
SKU: EVIK8R044	COLOR: Grey	20kg / 44lb
SKU: EVIK8R053	COLOR: Green	24kg / 53lb
SKU: EVIK8R070	COLOR: Red	32kg / 70lb







## SOFT KETTLEBELL

Heavy Duty Stitching For Extra Strength And Durability.  
High Density Stuffing To Keep Weight Centered During Use.  
Flat Bottom.

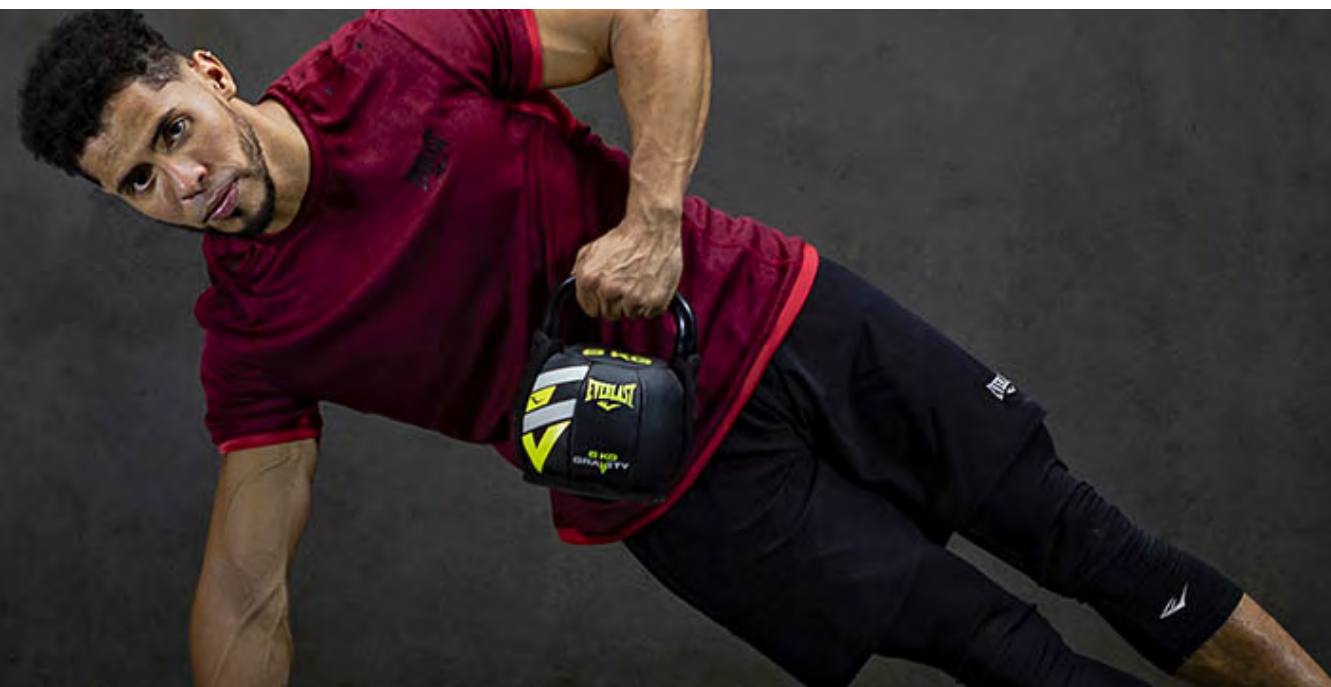
Handles Are Easy To Grip And Will Hold Chalk.  
Soft Material And Stuffing Provides Safety During  
Workouts And Protects Flooring.

**SKU:** EVSK7R06 **6Kg** **COLOR:** Black / Yellow

**SKU:** EVSK7R10 **10Kg** **COLOR:** Black / Blue

**SKU:** EVSK7R14 **14Kg** **COLOR:** Black / Red

**SKU:** EVSK7R16 **16Kg** **COLOR:** Black / Orange





## RUBBER MEDICINE BALL

Medicine Balls Are The Perfect Exercise Tool For All Fitness,  
Cross Training, Boxing And Gym Work.  
Build Your Resistance Levels, Endurance And Strength.

- 
- SKU:** EVRM6S12 **2KG COLOR:** Black / Purple  
**SKU:** EVRM6S13 **3KG COLOR:** Black / Yellow  
**SKU:** EVRM6S14 **4KG COLOR:** Black / Orange  
**SKU:** EVRM6S15 **5KG COLOR:** Black / Blue  
**SKU:** EVRM6S16 **6KG COLOR:** Black / Red





## POWERCORE BAG MEDICINE BALL

Textured panels ensure a secure grip for safety and stability. While exercising.  
Center placed sand chamber provides balance and rotation. Perfect addition to any core workout. Synthetic leather. Available in 9lbs and 12 lbs.

**SKU: 6512 9lbs COLOR: Black**

**SKU: 6513 12lbs COLOR: Black**



## WALL BALL (10lb 14lb 20lb 30lb )

CARBON FIBER FABRIC

Balls are ideal for rotational movements, core exercises of many types and dynamic strength training all while the ball remains dimensionally stable and balanced and moisture and scuff resistant.

Soft shell, heavy duty vinyl coated nylon construction design holds its shape over time and allows you to strike balls with arms and legs for more diverse training.



**SKU: EVWL7R010 10lbs COLOR: Black / Orange**

**SKU: EVWL7R014 14lbs COLOR: Black / Green**

**SKU: EVWL7R020 20lbs COLOR: Black / Blue**

**SKU: EVWL7R030 30lbs COLOR: Black**





**H.I.T.** HIGH INTENSITY TRAINING



## POWERCORE BAGS 10KG 15KG 20KG

The power bag from everlast is a versatile training tool to develop strength and cardiovascular fitness.

THE BAGS CAN ALSO BE USED IN A VARIETY OF WAYS;

Squats, walking lunges, chest press, shoulder press or explosive throw drills. alternatively lighter bags can be used with a training partner to throw, catch and move.

---

**SKU:** EVSB7S710 **10kg** **COLOR:** Red

**SKU:** EVSB7S715 **15kg** **COLOR:** Blue

**SKU:** EVSB7S720 **20kg** **COLOR:** Grey



**H.I.T.** HIGH  
INTENSITY  
TRAINING







## AB MAT TRAINER

EVERLAST AB MAT TRAINER PROVIDES:

Offers low-back comfort and support during ab exercises.

The contoured shape promotes safe lumbar extension, placing the abdominal muscles on a pre-stretch position resulting in a maximal abdominal activation. It is the perfect complement to a mat routine, elevating the body off the floor during crunches, curls, Sit-ups, side bends and back extensions.

---

**SKU:** EVAB9W100 **COLOR:** Black



## AB MAT PRO ABDOMINAL TRAINER

THE EVERLAST AB MAT PROVIDES:

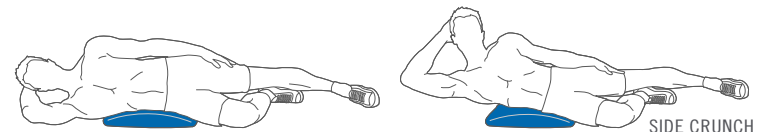
The full range of motion necessary to work the entire Abdominal muscle group.

A variety of exercises that isolate upper and/or lower abs, as well as the obliques and lower back muscles.

A safe, comfortable design contoured to your lower back Which helps to prevent injury and supports your spine.

---

**SKU:** EVAB4S06 **COLOR:** Blue





### 33cm MASSAGE ROLLER

Excellent for soothing muscle pains, balance exercises, and strength conditioning. Use your own body weight to help increase blood flow and circulation to the soft tissues. Improve springiness, range of motion, minimize pain and soreness.

#### FEATURES AND SPECIFICATIONS

Molded polyethylene foam technology. Smooth and semi-firm surface that will not lose its shape after multiple uses.

NEW

33  
cm

**SKU:** EVRL9W330 **COLOR:** Black / Red



### FOAM ROLLER

Excellent for soothing muscle pains, balance exercises, and strength conditioning. Use your own body weight to help increase blood flow and circulation to the soft tissues. Improve springiness, range of motion, minimize Pain and soreness.

#### FEATURES AND SPECIFICATIONS

Molded polyethylene foam technology. Smooth and semi-firm surface that will not lose its shape after multiple uses.

**SKU:** EVFR4I036 36" **COLOR:** Black

**SKU:** EVFR4I024 24" **COLOR:** Black

**SKU:** EVFR4I012 12" **COLOR:** Black







## EVERGRIP WEIGHTED VEST

VESTS ARE UNISEX.

Neoprene vest with iron-and-sand weight filling Adjustable straps for ideal fit and comfort.

EVERGRIP™ technology with textured panels underneath vest secures placement and limits vest movement during exercise.

Exercising at a heavier weight maximizes the effectiveness of your workout.

Best for strength training, total-body conditioning, and muscular and cardiovascular endurance.

**SKU: 6010G 10Lbs COLOR: Grey / Blue**

**SKU: 6020G 20Lbs COLOR: Grey / Purple**

FEATURING  
**EVERGRIP™**  
TECHNOLOGY

PROVIDE ADDITIONAL  
WRIST SUPPORT  
ANYTIME YOU  
NEED IT.



## WEIGHTLIFTING WRIST WRAPS

Wrist Wraps provide additional wrist support anytime you need it. Rubber closure for easy, custom tightening. Made from a cotton, elastic, and polyester blend that absorbs excess moisture and won't irritate the skin.

**SKU: EVWR7R527 COLOR: Black**

**ENGINEERED FOR:**  
PROVIDE WRIST SUPPORT FOR BOTH MEN AND WOMEN AND CAN BE USED  
IN A WIDE VARIETY OF SPORTS AND FITNESS ACTIVITIES

**ONE  
PAIR**  
LENGTH 20"



## HIGH PERFORMANCE KNEE WRAPS

Made of heavy duty elastic, 78" inches long / 3" wide. Knee wraps provide therapy and compression for the knee. Cold pack therapy is recommended for optimum recovery Of acute knee injuries. Wear during intense training to help prevent injuries. One size fits all, sold as a pair.

**SKU: EVKW9H752 COLOR: Black / Red**

**ENGINEERED FOR:**  
PROVIDE IMMENSE SUPPORT, STABILITY AND PROTECTION OF YOUR KNEES  
DESIGNED TO ADJUST TO YOUR MOVEMENTS WITH A HIGH-PERFORMANCE  
STRETCHABLE FABRIC, THE LIFTING WRAPS WEIGHTLIFTING SUPPORT  
BRACES ARE SURE TO OFFER YOU TOP-NOTCH STRETCHING WHICH FEELS  
EXTREMELY NATURAL.

**NEW**

**ONE  
PAIR**  
LENGTH 78"







## LIFTING STRAPS

Removes Pressure From Hands To Allow  
For Greater Lifting Ability.  
Provides Greater Lift With A Padded,  
Comfortable Hold On The Bar  
Durable 100% Cotton Webbing

**ONE  
SIZE  
FITS ALL**

ENGINEERED FOR:  
SUPERIOR HAND PROTECTION  
DURING WEIGHTLIFTING

**SKU:** EVCS1S20 **COLOR:** Black



## PRO GRIP WEIGHT LIFTING COTTON STRAPS

Grip flex technology adds extra cushioning and flexibility.  
Around the wrist during heavy lifting.  
Strap is made from heavy duty cotton and flex rubber for added  
Strength and a "no-slip" grip  
When using the strap, rubber side must always face bar  
20.5" extended length allows you to wrap the bar several times  
1.5" inches wide

**ONE  
PAIR**  
LENGTH 20.5"  
1.5" IN WIDE

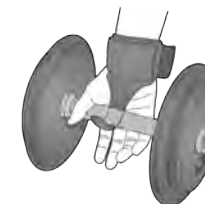
ENGINEERED FOR:  
SUPERIOR HAND PROTECTION  
DURING WEIGHTLIFTING

**SKU:** EVCS4H706 **COLOR:** Black



## PRO WEIGHT LIFTING HOOKS

Designed To Enhance Grip And Reduce Finger Fatigues.  
Neoprene Wrist Pad Cushions Keeps Wrist In Proper.  
Position To Help Prevent Hyper Extension.  
Ballistic Grade Nylon Increase Durability, Fully.  
Adjustable Closure.  
Sold As Pairs.



**ONE  
SIZE  
FITS ALL**

ENGINEERED FOR:  
SPECIALLY DESIGNED  
FOR HIGH INTENSITY  
TRAINING WORKOUTS

**SKU:** EVHK4H705 **COLOR:** Black

**H.I.T.** HIGH  
INTENSITY  
TRAINING



## SPORTS CHALK **300g**

MAGNESIUM CARBONATE

Ideal for Gymnastics, Weight lifting and High Intensity Training.

Enhance the grip on all sort of bars and sports equipment.

Designed to reduce hand moisture for better traction

Helps prevent your hands from slipping on the barbell or rings

---

SKU: EVCK9R300





## CONTOURED WEIGHT LIFTING BELT

Used during weightlifting activities.  
Expanded back support & more comfort with less irritation.  
Snug fit adds support and encourages proper form.  
Created for comfort and flexibility, provides exceptional support for the back.  
Encourages correct form throughout weight lifting routines.

**SKU:** EVSB4S39-SM **COLOR:** Black **S / M** FITS WAIST **SIZES 24"/34".**  
**SKU:** EVSB4S39-ML **COLOR:** Black **M / L** FITS WAIST **SIZES 34"/48".**



## UNIVERSAL WEIGHT LIFTING BELT

4"/6" WIDE WATERPROOF FOAM CORE BELT IS HAND WASHABLE, AIR DRY  
One Adjustable Size.  
Maximum lower back and abdominal support for heavier lifts!  
Strong and durable.  
This contoured belt helps you achieve killer results.  
Safely and comfortably.

**SKU:** EVUB084 **COLOR:** Black **4"**  
**SKU:** EVUB086 **COLOR:** Black **6"**



## 4" LEATHER WEIGHT BELT

Interior foam cushioning and suede lining for enhanced comfort.  
Heavy duty dual pronged steel roller buckle secures tensioning.  
Supports your lower back during those heavy brutal lifts.

**NEW**

ENGINEERED FOR:  
SUPPORT  
STABILITY  
POWER

**SKU:** EVLB9H440 **COLOR:** Black

**S M L XL**

## HOW TO WEAR

POSITION LEATHER PALM GRIPS ON FRONT OF HAND SO BUCKLE IS UNDER THUMB, AND FLAP ROLLS AROUND OUTER EDGE OF PALM. USE A FEW TIMES TO DETERMINE WHERE YOU WANT FLAP POSITIONED ON FINGERS. TRIM FLAP TO DESIRED LENGTH WITH SCISSORS.

## HOW TO USE

LEATHER PALM GRIPS WORK EVEN BETTER WITH A LITTLE SWEAT AND CHALK!

FAST ON OFF FOLD FLAT ON PALM TO USE FOLD BACK ON WRIST TO CLEAR EXCLUSIVE LEATHER GRIP PROTECTS AGAINST CALLUSES AND SKIN TEARING DESIGNED FOR RIGHT AND LEFT WITH QUICK RELEASE SIZED FOR BEST FIT AND GRIP COVERAGE

## DESIGNED FOR RIGHT AND LEFT WITH QUICK ON/OFF RELEASE

## LEATHER PALM GRIPS

Quick-release, Wrap-around, Fingerless Design  
Personally Customizable Grip Size  
(Trim To Match Your Finger Length)  
Leather Grip To Protect Hands  
Designed For Use With Right Or Left Hand  
Grip Folds Flat On Palm For Use And Folds  
Back On Wrist To Clear

**SKU:** EVPP6H001 **COLOR:** Charcoal



Along with protecting your hands from the cuts and calluses that can come with high-rep workouts, pull-up grips offer some unique innovations in convenience and customization.



Each grip gives the user the chance to personally trim the finger length using a simple pair of scissors to match their own hand size.



When worn, the protective leather grip can then either fold flat on the palm (When you need it) or fold back over the wrist strap to free up your hands again as needed.





## PALM PROTECTOR

Superior hand protection during weightlifting.

Superior Grip.

Flexible and durable rubber material.

### HOW TO USE

Slip fingers into the loops with the curved edge facing your thumb. Securely grip the bar and begin your training session.

**ONE  
SIZE  
FITS ALL**

ENGINEERED FOR:  
SUPERIOR HAND PROTECTION  
DURING WEIGHTLIFTING

**SKU:** EVPP7H094 **COLOR:** Black



## PALM PROTECTOR

Removes excess material from the fitness glove

Comfort-cooling solution for your hands

Radial finger loops provide fast on/off action

Optimum palm protection, positioning and grip

**ONE  
SIZE  
FITS ALL**

ENGINEERED FOR:  
SUPERIOR HAND PROTECTION  
DURING WEIGHTLIFTING

**SKU:** EVPP1000 **COLOR:** Black



## GRIP GUARD

Ideal for exercises such as rope climbing, pull ups, olympic lifts and kettlebell workouts.

These gloves are extremely lightweight and durable.

Designed to maximize breathability while preventing moisture.

Gripper gloves are a good choice for anyone who wants to improve grip during training workouts.

FEATURING  
**EVERCOOL™**  
TECHNOLOGY

ENGINEERED FOR:  
SPECIALLY DESIGNED  
FOR HIGH INTENSITY  
TRAINING WORKOUTS

**SKU:** EVWG5H444 **COLOR:** Black

**S / M - M / L**



The Everlast logo, featuring the brand name in a stylized, bold, serif font with a winged emblem below it.

HIGH INTENSITY  
TRAINING



[www.everlastlatam.com](http://www.everlastlatam.com)



[everlastlatino](https://www.instagram.com/everlastlatino)



[@everlastlatam](https://twitter.com/everlastlatam)

DEPORTIVA INTL. S.A.

An authorized licensee of Everlast worldwide inc,  
Via España #14 Edificio Deportes Jimmy, Panamá  
T (507) 300.3075 / F (507) 300.3082